



**ABAX  
KINGFISHER**

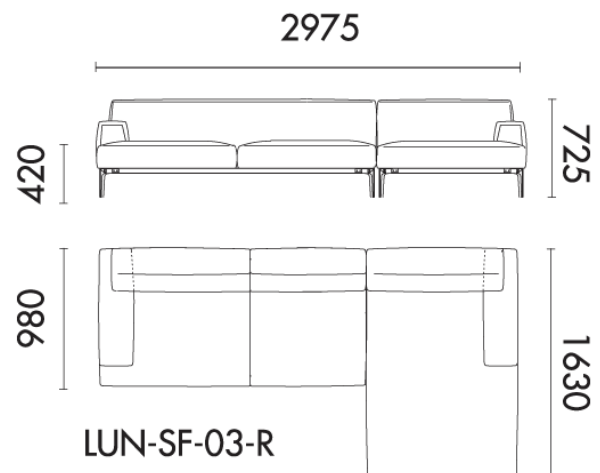
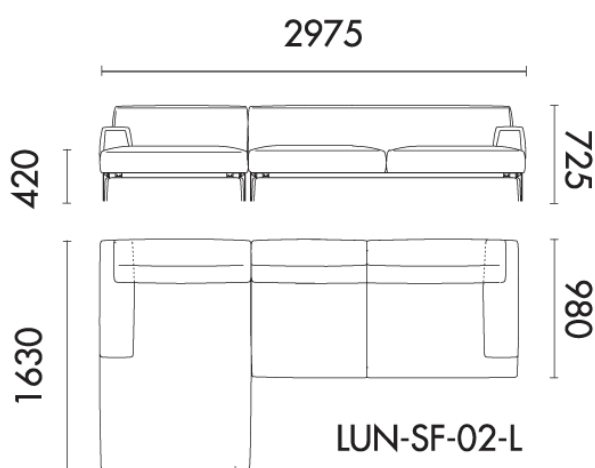


**LUNA**

PRODUCT DATA SPECIFICATION

## Luna L-Shape Lounge

Description	
<b>DIMENSIONS</b>	<b>Overall Dimensions:</b> 2975mmW x 1630mm - 980mmD x 725mmH <b>Seat Height:</b> 420mmH <b>Fabric Meterage:</b> 21.6m
<b>MATERIALS &amp; CONSTRUCTION</b>	The seat consists of a pinewood and plywood frame, filled with high resilience foam and finished in upholstered The frame is constructed from aluminium
<b>FEATURES</b>	Great for waiting and breakout areas
<b>WARRANTY</b>	10 Years
<b>LEAD TIME</b>	12 - 14 Weeks
<b>FINISH</b>	<b>Seat Finish</b> Fabric Grade A, B, C, D or E  <b>Base Colours</b> Aluminium Base
<b>CUSTOMISABLE</b>	Custom upholstery available on request – additional lead times and costs apply
<b>ACCESSORIES</b>	N/A



## Fabric Colour Swatches

### OTE Sunday

**A**

**Composition** 100% Polyester  
**Origin** China  
**Abrasion**  $\geq$  40000  
**Lightfastness**  
**Rubbing** 4.5  
**Pilling** 4



Sunday 10



Sunday 34



Sunday 39



Sunday 53



Sunday 83



Sunday 103



Sunday 149



Sunday 02



Sunday 27



Sunday 22



Sunday 80

## OTE Vico

A

<b>Composition</b>	93% Polyester, 5% Cotton, 2% Nylon
<b>Origin</b>	China
<b>Abrasion</b>	≥ 40000
<b>Lightfastness</b>	4
<b>Rubbing</b>	4
<b>Pilling</b>	4



vico-04



vico 08



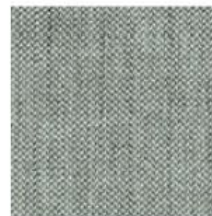
vico 09



vico 11



vico 20



vico 33



vico 41



vico 47



vico 64

## OTE Decent

**A**

Composition 100% Polyester  
Origin China  
Abrasion  $\geq$  40000  
Lightfastness 4  
Rubbing 4  
Pilling



Decent 02



Decent 09



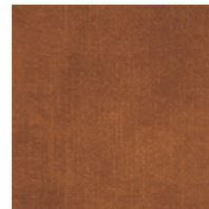
Decent 10



Decent 15



Decent 21



Decent 26



Decent 29

## Hafeele LE9140B

**B**

Composition 100% Polyester  
Origin China  
Abrasion  
Lightfastness 4  
Rubbing 4-5  
Pilling



LE9140B-01



LE9140B-02



LE9140B-16



LE9140B-27



LE9140B-33



LE9140B-35



LE9140B-38

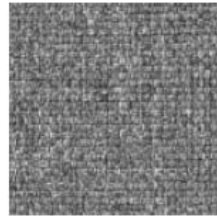
## Gabriel Medley

**B**

Composition 100% Polyester  
Origin Denmark  
Abrasion  $\geq$  75000  
Lightfastness 5-7  
Rubbing 4-5  
Pilling 4



GM-60004



GM-60167



GM-61002



GM-61003



GM-62002



GM-63017



GM-63064



GM-66007



GM-66010



GM-66145



GM-67053



GM-68002



GM-68005

## Novatex

**B**

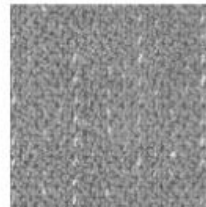
**Composition** 79% Polyester, 13%  
 Acrylic, 8% Viscosa  
**Origin** China  
**Abrasion**  $\geq$  20000  
**Lightfastness**  
**Rubbing** 4-4.5  
**Pilling**



NA 05



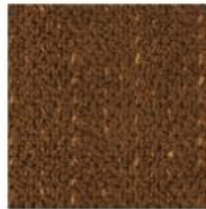
NA 14



NA 18



NA 62



NA 71

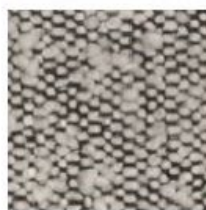
## MAYA

**B**

**Composition** 54% Polyester,  
 46% Acrylic  
**Origin** China  
**Abrasion**  $\geq$  25000  
**Lightfastness**  
**Rubbing** 3-4  
**Pilling**



A2267-2A



A2267-3A

## Sunbrella

C

Composition  
Origin USA  
Abrasion

Lightfastness 4-5  
Rubbing  
Pilling



Annex Cobalt 44267-0004



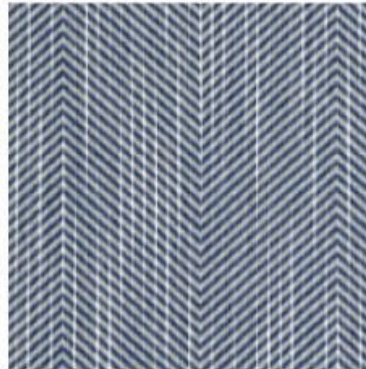
Annex Guava  
44267-0006



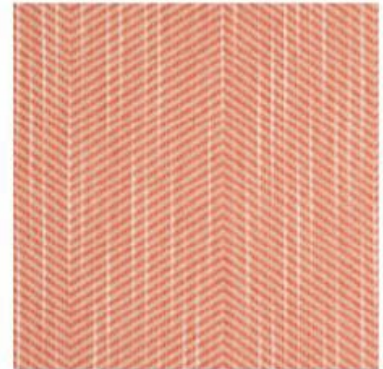
Draft Classic  
145408-0001



Tropics Jungle  
145214-0000



Annex Cobalt 44267-0004



Annex Guava 44267-0006



Draft Classic 145408-0001



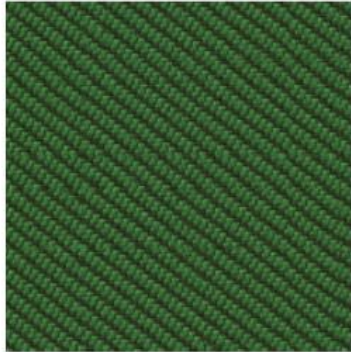
Tropics Jungle 145214-0000



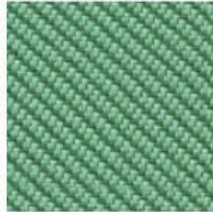
## Camira Oceanic

**D**

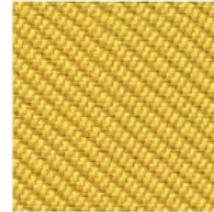
**Composition** 100% post-consumer recycled plastic, including 50% SEAQUAL yarn  
**Origin** UK  
**Abrasion**  $\geq 100000$   
**Lightfastness** 5  
**Rubbing** 4  
**Pilling** 4



OOC03



OOC04



OOC07



OOC08



OOC10



OOC11



OOC12



OOC13



OOC15

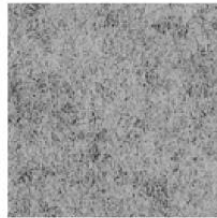


OOC16

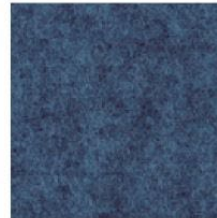
## Camira Blazer

**D**

**Composition** 100% Pure New Wool  
**Origin** UK  
**Abrasion**  $\geq$  50000  
**Lightfastness** 5  
**Rubbing** 4  
**Pilling** 4



CUZ1E



CUZ1W

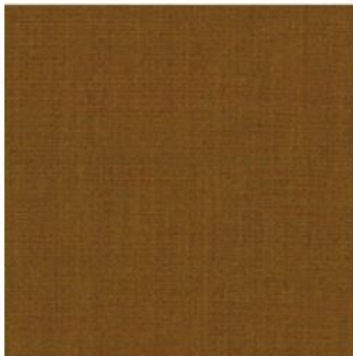


CUZ30

## Kvadrat Remix 3

**E**

**Composition** 90% new wool worsted  
10% nylon  
**Origin** UK  
**Abrasion**  $\geq$  100000  
**Lightfastness** 6  
**Rubbing** 7  
**Pilling** 4



Remix 30422



Remix 30612



Remix 30632



Remix 30743



Remix 30933



Remix 30982