



**ABAX
KINGFISHER**

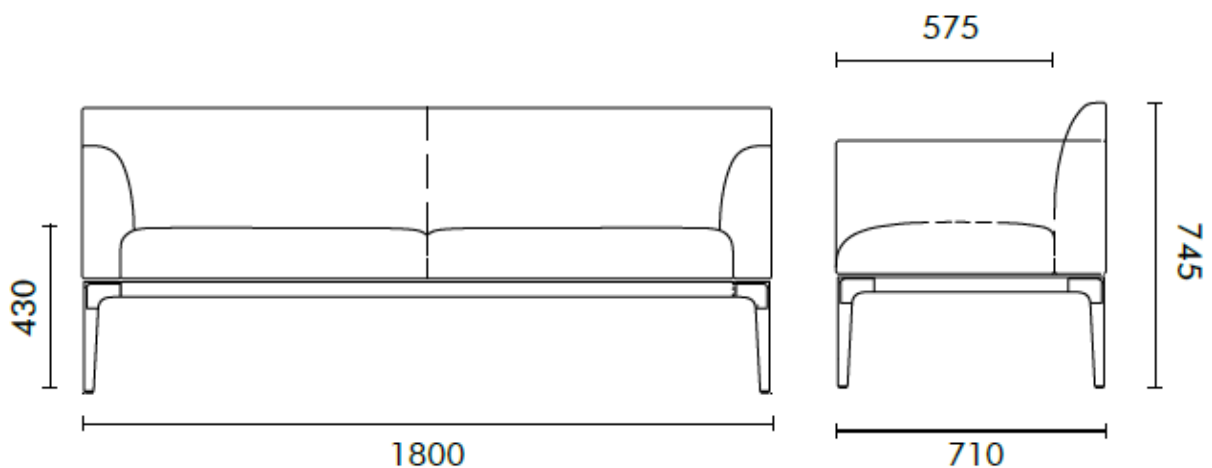


DADA

PRODUCT DATA SPECIFICATION

Dada Double Lounge

Description	
DIMENSIONS	Overall Dimensions: 1800mmW x 710mmD x 745mmH Seat Height: 430mmH Fabric Meterage: 4.2m
MATERIALS & CONSTRUCTION	The seat is constructed from pine wood and plywood frame, filled with resilience foam and finished in upholstery The base is constructed from aluminium
FEATURES	Great for waiting and breakout areas
WARRANTY	10 Years
LEAD TIME	12 – 14 Weeks
FINISH	Seat Finish Fabric Grade A, B, C, D or E Base Colours Matt Black Powdercoat
CUSTOMISABLE	Custom upholstery available on request – additional lead times and costs apply
ACCESSORIES	N/A



Fabric Colour Swatches

OTE Sunday

A

Composition 100% Polyester
Origin China
Abrasion ≥ 40000
Lightfastness
Rubbing 4.5
Filling 4



Sunday 10



Sunday 34



Sunday 39



Sunday 53



Sunday 83



Sunday 103



Sunday 149



Sunday 02



Sunday 27



Sunday 22



Sunday 80

OTE Vico

A

Composition	93% Polyester, 5% Cotton, 2% Nylon
Origin	China
Abrasion	≥ 40000
Lightfastness	4
Rubbing	4
Pilling	4



vico-04



vico 08



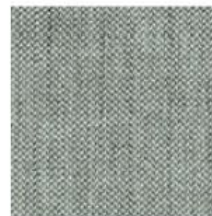
vico 09



vico 11



vico 20



vico 33



vico 41



vico 47

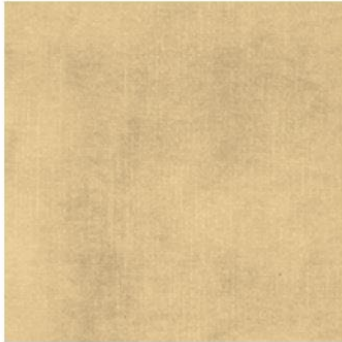


vico 64

Ote Decent

A

Composition 100% Polyester
 Origin China
 Abrasion \geq 40000
 Lightfastness 4
 Rubbing 4
 Pilling



Decent 02



Decent 09



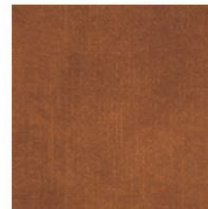
Decent 10



Decent 15



Decent 21



Decent 26



Decent 29

Hafeele LE9140B

B

Composition 100% Polyester
 Origin China
 Abrasion
 Lightfastness 4
 Rubbing 4-5
 Pilling



LE9140B-01



LE9140B-02



LE9140B-16



LE9140B-27



LE9140B-33



LE9140B-35



LE9140B-38

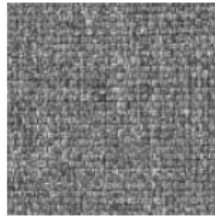
Gabriel Medley

B

Composition 100% Polyester
Origin Denmark
Abrasion ≥ 75000
Lightfastness 5-7
Rubbing 4-5
Pilling 4



GM-60004



GM-60167



GM-61002



GM-61003



GM-62002



GM-63017



GM-63064



GM-66007



GM-66010



GM-66145



GM-67053



GM-68002



GM-68005

Novatex

B

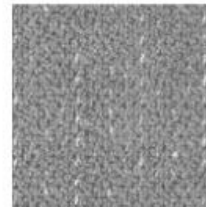
Composition 79% Polyester, 13%
Acrylic, 8% Viscosa
Origin China
Abrasion ≥ 20000
Lightfastness
Rubbing 4-4.5
Pilling



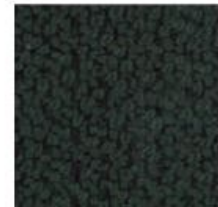
NA 05



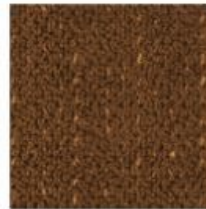
NA 14



NA 18



NA 62



NA 71

MAYA

B

Composition 54% Polyester,
46% Acrylic
Origin China
Abrasion ≥ 25000
Lightfastness
Rubbing 3-4
Pilling



A2267-2A



A2267-3A

Sunbrella

C

Composition
Origin USA
Abrasion

Lightfastness 4-5
Rubbing
Pilling



Annex Cobalt 44267-0004



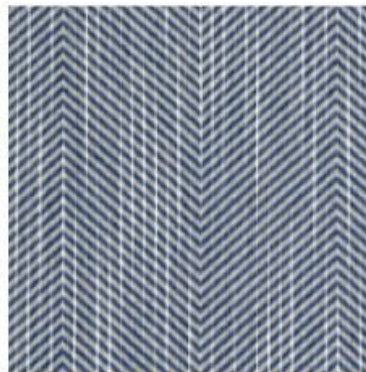
Annex Guava 44267-0006



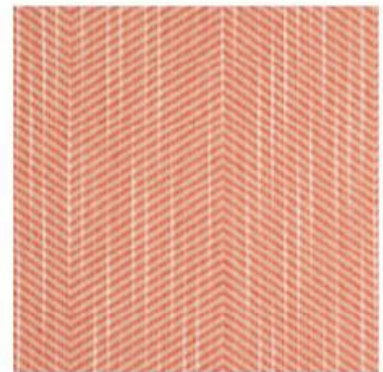
Draft Classic 145408-0001



Tropics Jungle 145214-0000



Annex Cobalt 44267-0004



Annex Guava 44267-0006



Draft Classic 145408-0001

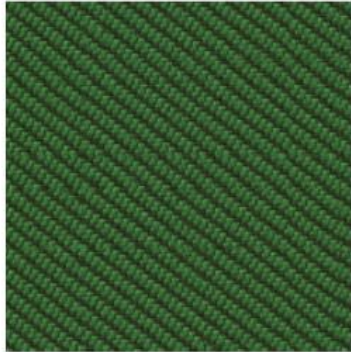


Tropics Jungle 145214-0000

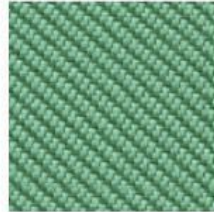
Camira Oceanic

D

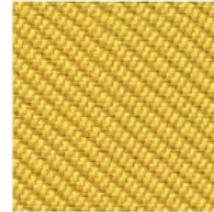
Composition 100% post-consumer recycled plastic, including 50% SEAQUAL yarn
Origin UK
Abrasion ≥ 100000
Lightfastness 5
Rubbing 4
Pilling 4



OOC03



OOC04



OOC07



OOC08



OOC10



OOC11



OOC12



OOC13



OOC15

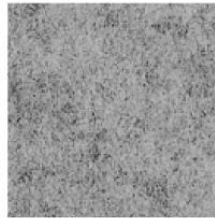


OOC16

Camira Blazer

D

Composition	100% Pure New Wool
Origin	UK
Abrasion	≥ 50000
Lightfastness	5
Rubbing	4
Pilling	4



CUZ1E



CUZ1W

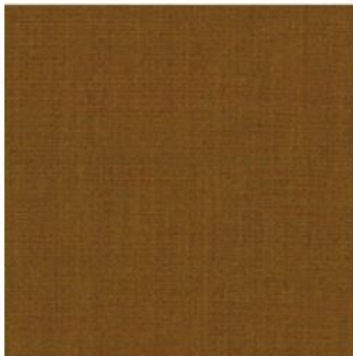


CUZ30

Kvadrat Remix 3

E

Composition	90% new wool worsted 10% nylon
Origin	UK
Abrasion	≥ 100000
Lightfastness	6
Rubbing	7
Pilling	4



Remix 30422



Remix 30612



Remix 30632



Remix 30743



Remix 30933



Remix 30982