



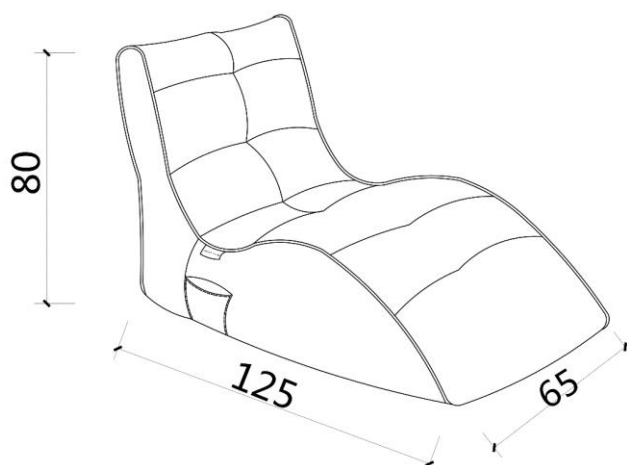
**ABAX
KINGFISHER**



AVATAR
PRODUCT DATA SPECIFICATION

Avatar Lounger Bean

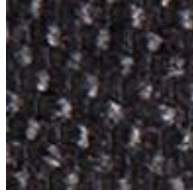
Description											
DIMENSIONS BEAN CAPACITY	1250mmW x 650mmD x 800mmH										
MATERIALS & CONSTRUCTION	Constructed from 63% Polyester, 37% Viscose Internal Elastic Ambi-Spring™ system 350 Litres of beans										
FEATURES	Structured elastic support in all the right places 2 x Safety Locking YKK Zips Dual bead-filling Funnelweb compartments Carry handle for easy moving Side pockets Takes approx. 350 litres of beans										
WARRANTY	12 Months										
LEAD TIME	35 Working Days										
FINISH	<table border="0"> <tr> <td>Eco Weave</td> <td>Aubergine Dream</td> </tr> <tr> <td>Hot Chocolate</td> <td>Tundra Spring</td> </tr> <tr> <td>Sakura Pink</td> <td>Lime Citrus</td> </tr> <tr> <td>Lucious Grey</td> <td>Blue Jazz</td> </tr> <tr> <td>Black Sapphire</td> <td>Wildberry Deluxe</td> </tr> </table>	Eco Weave	Aubergine Dream	Hot Chocolate	Tundra Spring	Sakura Pink	Lime Citrus	Lucious Grey	Blue Jazz	Black Sapphire	Wildberry Deluxe
Eco Weave	Aubergine Dream										
Hot Chocolate	Tundra Spring										
Sakura Pink	Lime Citrus										
Lucious Grey	Blue Jazz										
Black Sapphire	Wildberry Deluxe										
CUSTOMISABLE	N/A										



Finishes



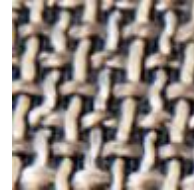
Aubergine Dream



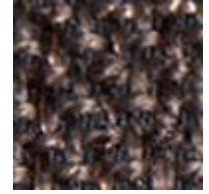
Black Sapphire



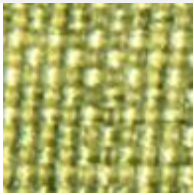
Blue Jazz



Eco Weave



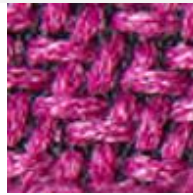
Hot Chocolate



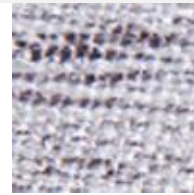
Lime Citrus



Luscious Grey



Sakura Pink



Tundra Spring



Wildberry Deluxe